

Rampart Scotland Project 003:
Sheriffside, Gifford, East Lothian
Season 4: Data Structure Report

*Murray Cook and David Connolly
March 2016*



Sheriffside, Gifford, East Lothian

Data Structure Report

National Grid Reference (NGR):	NT 55505 67739
Rampart Scotland Project No:	003
Prepared by:	Murray Cook and David Connolly
Illustration by:	David Connolly
Date of Fieldwork:	July 2015
Date of Report:	March 2016

Abstract

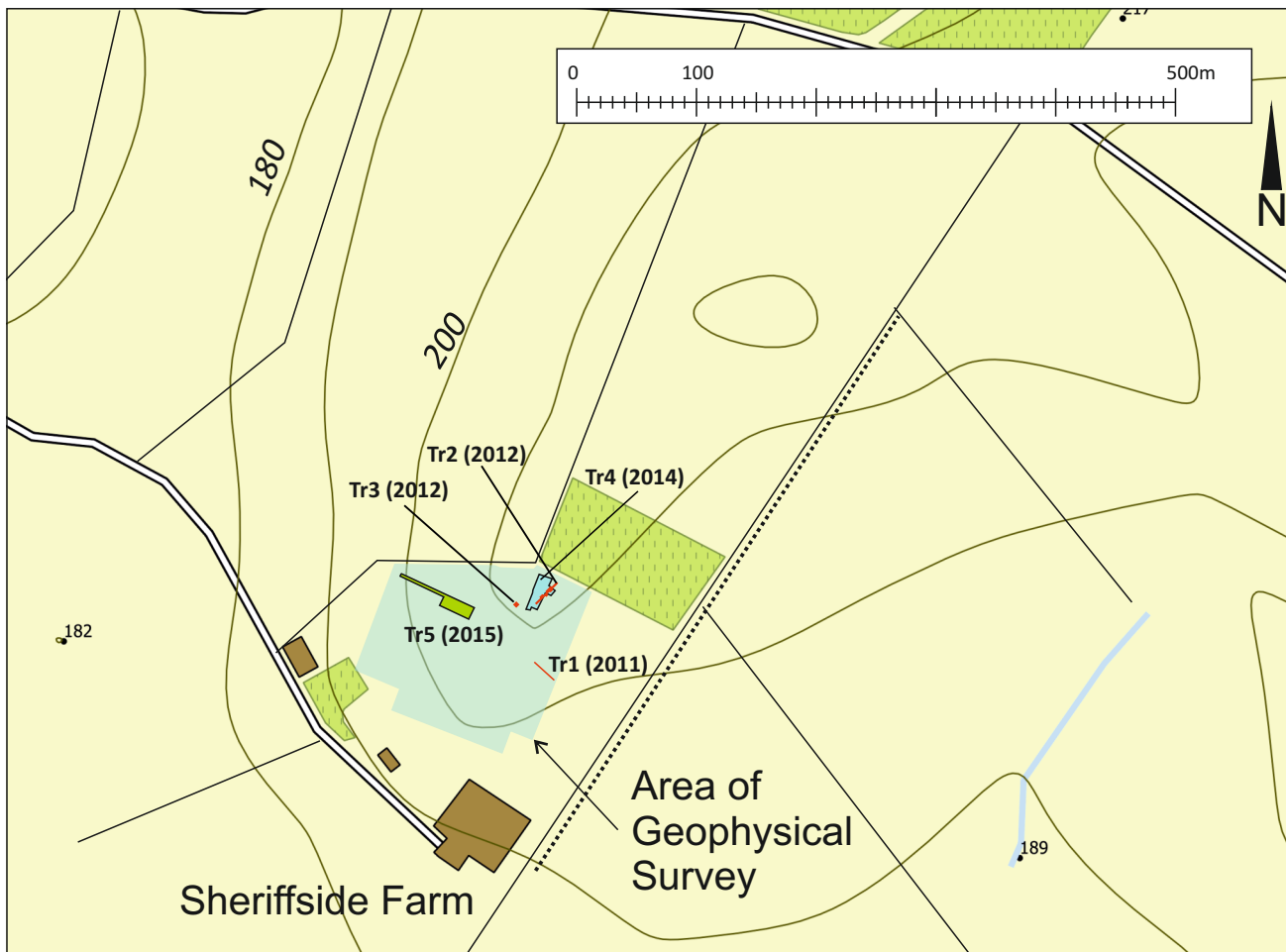
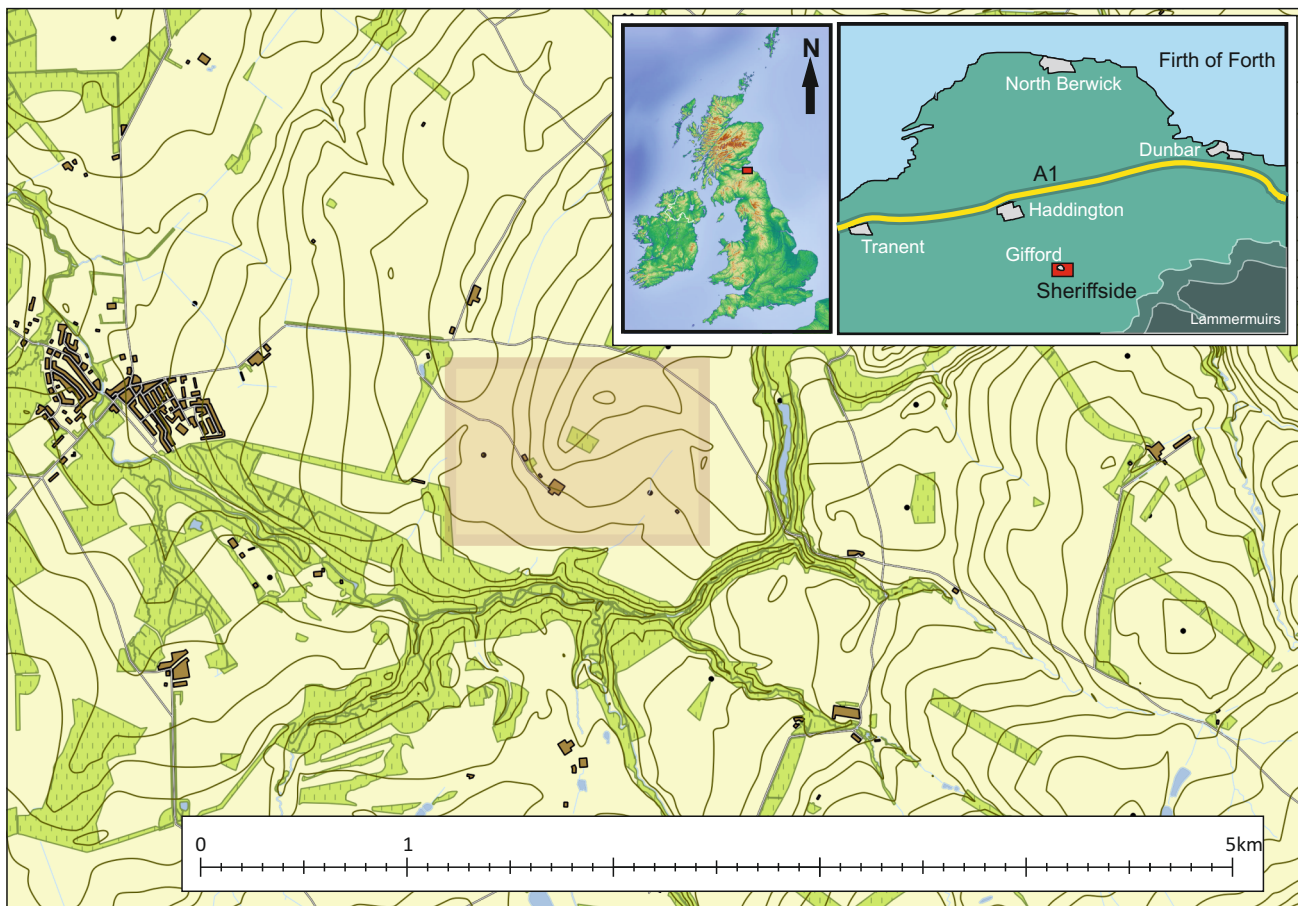
This report represents the results of Rampart Scotland Project 3, Season 4: a fourth phase of archaeological evaluation undertaken at Sheriffside cropmark enclosure, Gifford, East Lothian undertaken in August 2015.

The project comprised the machine excavation of a single trench orientated east-west and measuring 9.5m wide and 23.5m long, orientated east-west with a 1.5m wide extension running c 40m to the west.

The eastern end of the trench had been heavily plough truncated resulting in the complete destruction of all cut features. To the west and downslope the topsoil had been deepened.

The excavation identified five ditches and five palisades all of which were orientated roughly northeast-southwest and appeared to enclose the hilltop.

It was not possible to explicitly link the linear features identified in 2015 with those of earlier seasons and thus the 2015 features were assigned different numbers (though it is clear there will be a connection between them).



- ▬ 2011/2012 trenches
- ▬ 2014 trench
- ▬ 2015 trench
- ▭ resistivity

Contains OS data © Crown Copyright [and database right] 2015

Figure 1: Location map

1 INTRODUCTION

1.1 Background

1.1.1 Sheriffside, Gifford, East Lothian comprises a multiple ditched cropmark enclosure (Figures 1, 2 and 3; NMRS NT56NE 43). The report from the 2012 Season contains the background to Rampart Scotland, Sheriffside and enclosure research in East Lothian http://www.rampartscotland.co.uk/pdf/DSR_sheriffside_2012.pdf (Cook, Connolly and Druce 2012).

1.2 Location

1.2.1 The Sheriffside enclosure is located in a silage field, immediately to the north of Sheriffside Farm, Gifford, East Lothian (NT 55505 67739). The enclosure is located on the south eastern edge of long ridge circa 2 km from the foothills of the Lammermuir hills to the east. Behind the site to the north lies a major route through the hills, to Longformacus.

2 PROJECT AIMS AND OBJECTIVES

2.1 Introduction

2.1.1 The aims of the East Lothian Hillfort Project are two fold:

1. To increase the currently available data-set for East Lothian hillforts by additional survey;
2. to recover dating evidence of the main sequences of enclosure, use and reorganisation of as many hillforts in East Lothian as can be accessed (the term *hillfort* is used as a portmanteau term to describe large banked prehistoric enclosures);

2.1.2 Project three targeted Sheriffside, Gifford and has one key objective:

1. to open large excavation areas in order to better understand the information recovered from the stratigraphic sequence identified in 2012.

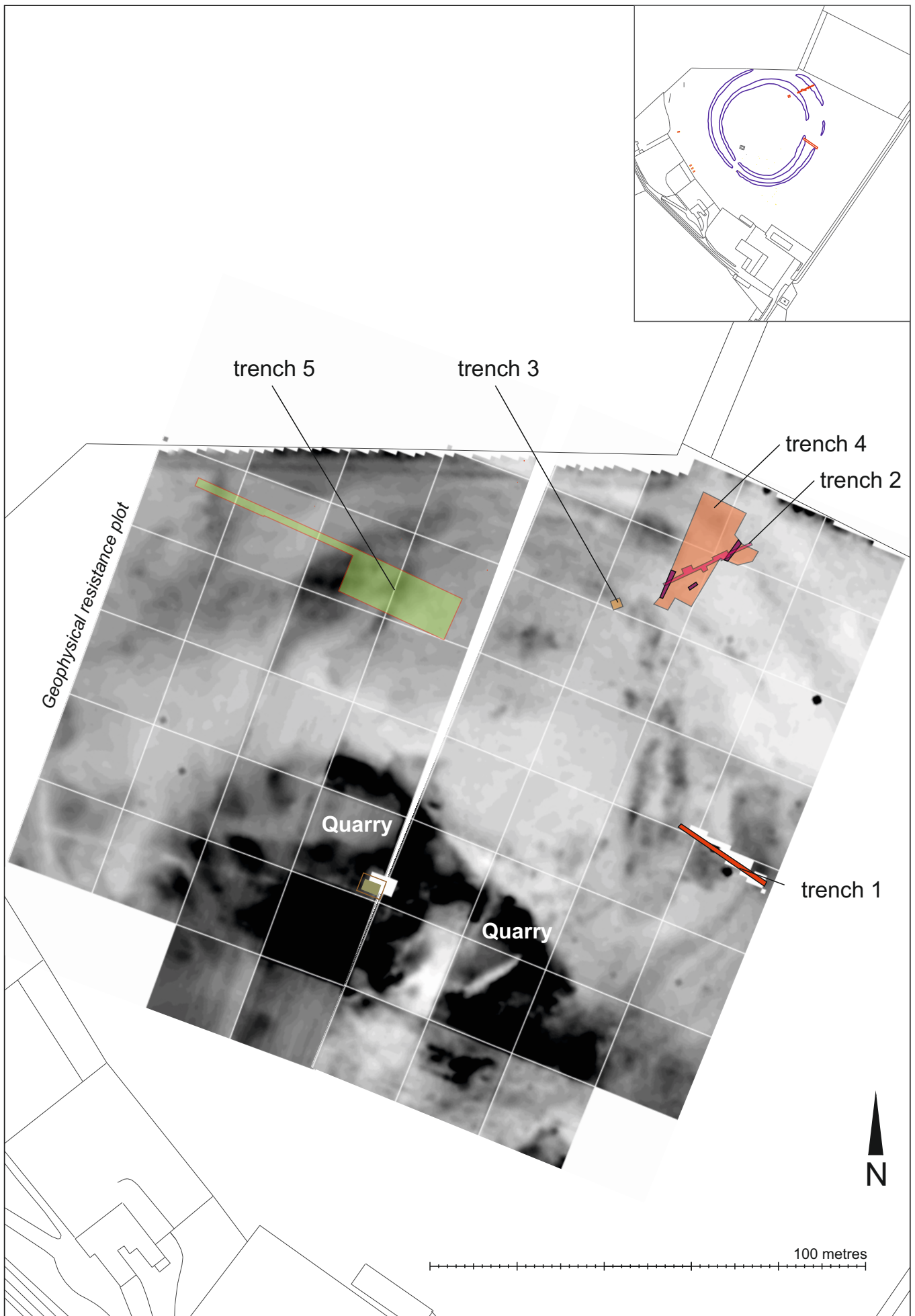


Figure 2: Location of trenches and geophysical survey results

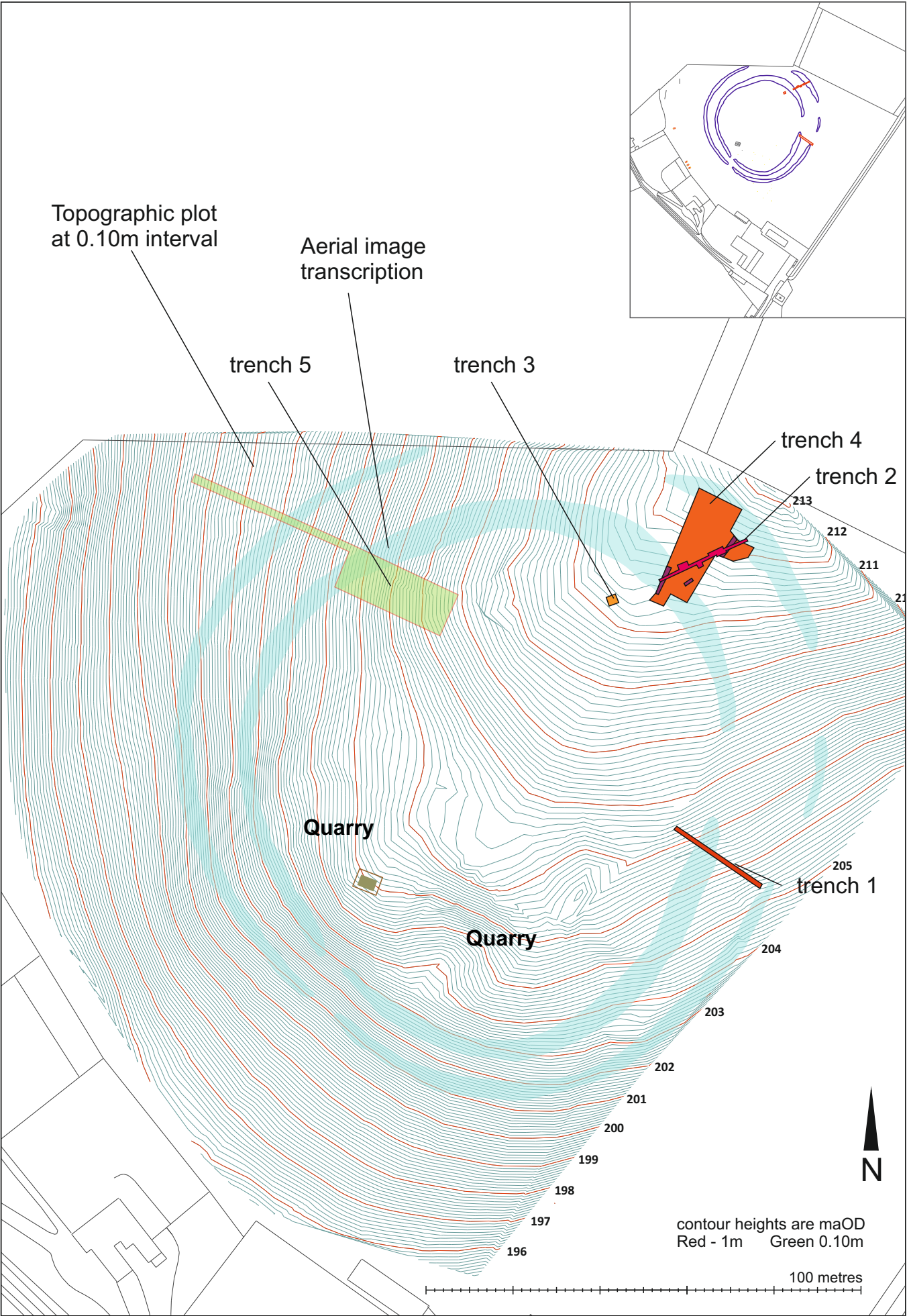


Figure 3: Location of trenches and topographical survey

3 METHODOLOGY

3.1 Excavation

3.1.1 The field work was run by Murray Cook and David Connolly using volunteers within a formal training environment and took place between the 6th and 17th July, 2015.

3.1.2 The excavation area measured measuring 9.5m wide and 23.5m long, orientated east-west with a 1.5m wide extension running c 40m to the west and was stripped by both JCB and tracked 360 with a flat bladed ditching bucket under constant professional archaeological supervision, down to the underlying subsoil through which archaeological features were visible. The exposed surface was cleaned by hand and scanned by a metal detectorist, with potential targets flagged – in addition, all topsoil spoil was scanned for metal artefacts. The subsequent excavation was undertaken entirely by hand under supervision.

3.1.3 Eight sondages (A, B, C, D, E, F, G, H and I) were excavated across features identified within Trench 5;

- Sondage A was orientated north-west to south-east and measured 2m by 5m and was intended to confirm the nature of the subsoil,
- Sondage B was orientated east-west and measured up to 0.75m wide and 1.5m long and was intended to characterise Ditch 6,
- Sondage C was orientated north-west to south-east and measured c1.5m by 0.25m by 2.5m and was intended to characterise a putative palisade which was revealed to be a natural cluster of stones, probably dragged from the east,
- Sondage D was orientated north-west to south-east up to 1m wide and 12m long and was intended to characterise Palisade 5, Ditch 6, Ditch 7 and Palisade 6,
- Sondage E was orientated north-south and measured 2.5m by 3.5m and was intended to confirm the nature of a putative palisade which was revealed to be part of Ditch 5,
- Sondage F was orientated north-south and measured 13m by 1.5m and was intended to characterise the relationship between Ditch 7 and Ditch 6,
- Sondage G was orientated east-west and measured 10m long and 1m wide and was excavated to remove redeposited soil to expose underlying cut features (Palisades 6, 7 and 8),
- Sondage H was orientated east-west and measured 1m by 4m and excavated to remove redeposited soil to expose underlying cut features (Ditch 8),
- Sondage I was orientated east-west and measured 17m by 1.5m excavated to remove redeposited soil to expose underlying cut features (Ditches 8, 9 and Palisade 9).

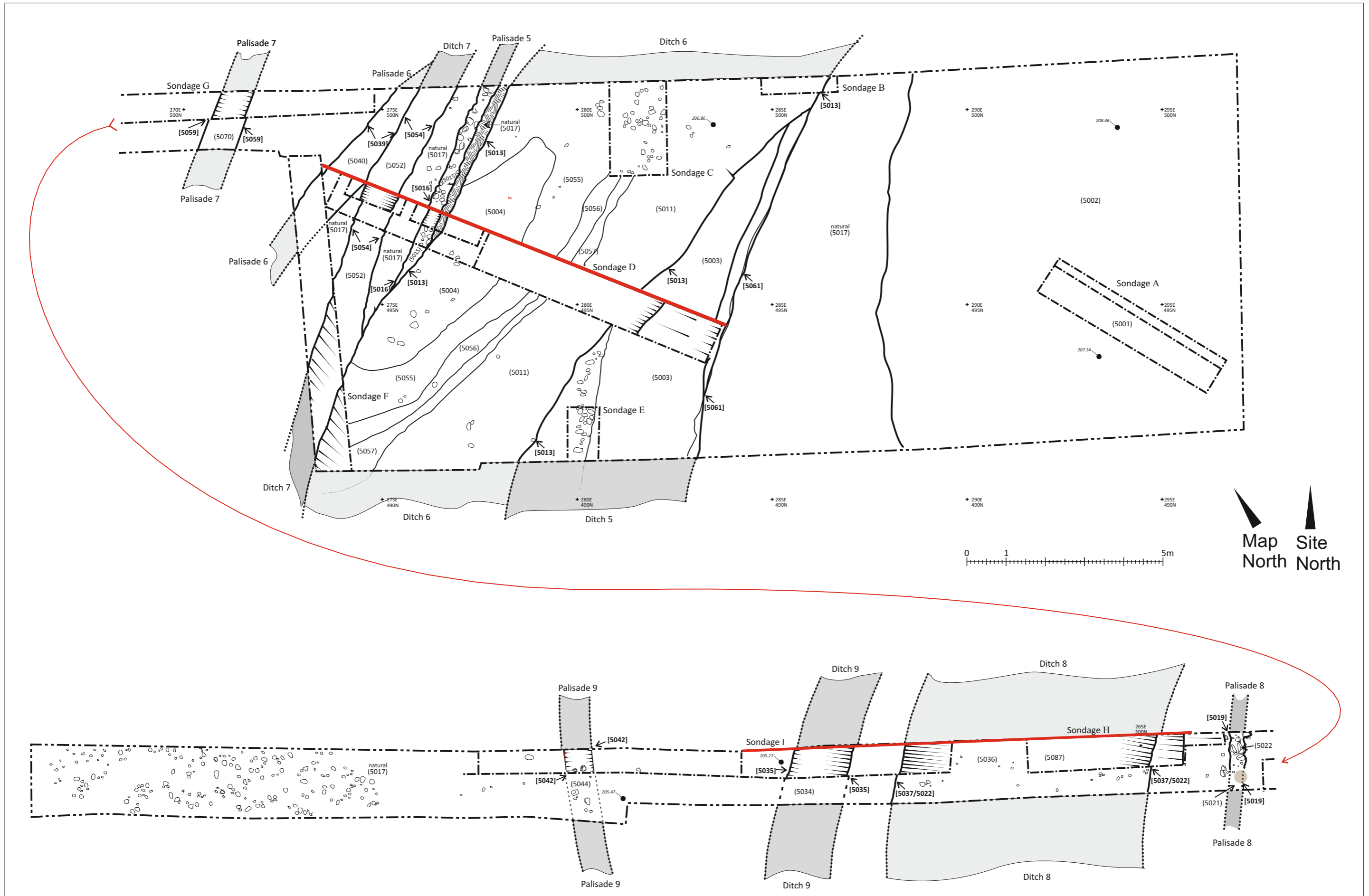


Figure 4: Plan of Trench 5

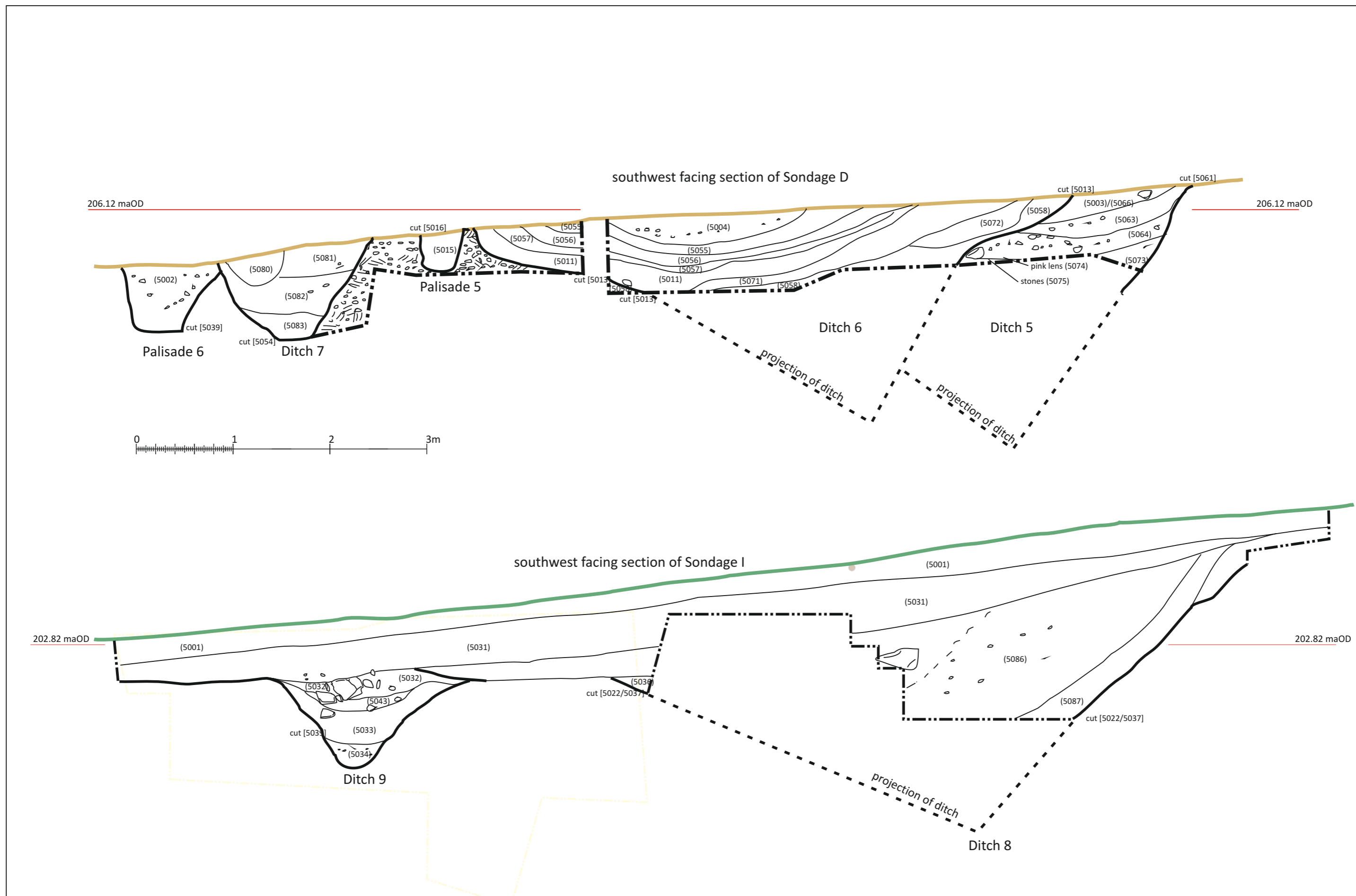


Figure 5: Sections of Sondage D and Sondage I

4 RESULTS

4.1 Introduction

4.1.1 The archaeological excavation was undertaken in reasonably dry weather conditions with good site and feature visibility, with a few days of extremely bad weather. The following text should be read in conjunction with the data presented in Appendices 1-5.

4.2 Excavation

4.2.1 The cleaning of Trench 5 revealed that its eastern end had been heavily impacted by ploughing and identified five palisades (P5-9) and five ditches (D5-9) (Figure 4). While it is likely that some of these features were identified in previous seasons we cannot explicitly confirm this. The features are described from east to west.

4.2.2 While a small finds assemblage including a number of ceramic sherds, was recovered from the excavation at the time of writing these have not yet been fully assessed and reported on and will be simply be listed in their stratigraphic location. In addition, two unstratified finds were recovered: a fragment of hammer stone (SF7) and a possible portion of slag (SF2).

4.2.3 Ditch 5 (Figures 4 and 5) was encountered in the western end of Sondages D and E and had been truncated by D6. D5 [5061] was not fully excavated but was orientated north-south and had a near vertical eastern edge and was at least 0.7m deep and appeared to have been associated with a bank, the revetment of which (5075) was identified as a linear stone feature in Sondage E. The upper fill of D5, (5003) was hard packed light brown grey sandy soil up to 0.22m thick and appears to represent redeposited bank material. Under (5003) lay (5063) a pink grey sandy silt up to 0.24m thick, which again appears to be redeposited bank material. (5064) lay under (5063) and comprised a mid-brown sandy silt up to 0.3m thick with c 10% charcoal inclusions and appears to represent a tip line from internal use of the enclosed area. Within (5064) lay (5074) a lens of pink clay rich material which appears to represent weathering from the putative bank associated with D5. At the western end of Sondage D and directly under (5064) lay (5073) a mid brown charcoal rich sandy material at least 0.26m thick and interpreted as a possible tip-line. Oak charcoal from (5073) was dated to 2274±30 (SUERC 65196) which when calibrated to 2-sigma gives a range of 401-351 cal BC (53.4%). Abutting (5064) was (5075) a collection of sub-rounded stones measuring on average 0.1m, 0.2m by 0.2m, which appear to be collapsed bank revetment.

4.2.4 Ditch 6 (Figures 4 and 5) was encountered in Sondages D and F, is orientated north-east to south-west and cuts P5, D5 and D7. Sondage D was aligned perpendicular to D6 while Sondage F was at a more oblique angle and thus the results of Sondage D will be described first: [5013] measures c 5m wide and up to 0.8m deep, with even sloping sides though was not fully excavated. The upper fill of [5013], (5004) was a brown friable silt up to 0.3m thick and surviving as a discrete oval deposit within [5013] and appears to represent the natural infilling of D5. (5004) overlay (5055) a dark charcoal rich silty soil up to 0.2m thick which appears to be a tip line and which contained

two sherds of prehistoric pottery (SFs1 and 5). (5055) overlay (5056) a light brown sandy soil up to 0.13m thick, which may represent a stabilisation event in the ditch fill. Under (5056) lay (5057) a dark brown friable clay rich soil up to 0.08m thick which again appears to represent weathering from an associated bank. A single sherd of prehistoric pottery was recovered from (5057), (SF4). Under (5057) lay (5011) a hard packed mineral rich sandy layer up to 0.2m thick, representing erosion from the bank. (5071) lay under (5011) and comprised a reddish brown friable material up to 0.13m thick, possibly representing a tip line. The lowest excavated fill of [5013] which lay directly under (5071) was (5058) a dark friable soil with traces of charcoal up to 0.09m thick, though this was not fully excavated.

- 4.2.5 In Sondage F, the excavated sequence was simpler than in Sondage D, though of course the window of observation was smaller and at an oblique angle to the line of feature: the upper fill (5047), which lies over (5048) comprises medium brown sandy clay, up to 0.3m thick and is possibly the same as (5004). (5048), which lies over (5049) and (5050) comprises a mid to dark brown sandy silt, up to 0.44m deep and appears to represent a stabilisation event in the ditch fill, similar in nature to (5056). (5049) which underlies (5048) comprises a pinkish brown gravelly sand, up to 0.3m thick and appears to represent collapse from a bank and is similar in nature to (5011). (5050) which was only identified at the base of the ditch represent a dark brown clay silt, which contained a single sherd of prehistoric pottery (SF6) and appears to be a tip line from internal activity.
- 4.2.6 Palisade 5 (Figures 4 and 5) was sampled in Sondage D, is orientated north-east to south-west and was cut by Ditch 6. [5016] measured 0.38m wide and up to 0.40m deep with near vertical sides and a rounded base and was filled with two abutting fills a mid brown silt (5007) and a series of sub-rounded packing stones (5016). Within both fills were two round post-pipes (5025) and (5026) both which were 0.25m in diameter.
- 4.2.7 Ditch 7 (Figures 4 and 5) was sampled in Sondages D and F, is orientated roughly north-east to south-west and was cut by D6. [5054] measured 1.15m wide and up to 0.9m deep with steep sides and a flat base. The upper fills comprise (5080) and (5081) which abut each other and lie over (5082). (5080) comprised a hard packed light brown material up to 0.3m thick and may have been redeposited natural from the bank. (5081) comprised a friable light brown silt up to 0.3m thick. (5082) comprised a mid-brown silt with clay inclusions up to 0.4m thick. The basal fill, (5083) which underlay (5082) comprised mid-brown clay rich silt up to 0.4m thick.
- 4.2.8 Palisade 6 (4 and 5) was sampled by Sondage D and is orientated roughly north-east to south-west. [5039] measures up to 1m wide and 0.6m deep with near vertical sides and a flat base and is filled with a single mid-brown silty soils (5040).
- 4.2.9 Palisade 7 (Figure 4) was sampled in Sondage G and is orientated roughly north-east to south-west. [5059] measures 0.43m wide and 0.6 m deep, has near vertical sides with a flat base and is filled with (5038) and (5070). The upper fill (5070) comprises (5038) a reddish brown compact material, with some 10% small stones, and is up to 0.45m deep. The lower fill, (5038) comprises a grey brown compact clay with 20% subrounded stones, possibly packing stones.

- 4.2.10 Palisade 8 (Figure 4) was identified in Sondage G and is orientated roughly north-east to south-west but was unexcavated. [5019] measures around 0.18m wide and is filled with (5019) and orange brown soil and (5019) a stone fill assumed to be packing stones.
- 4.2.11 Ditch 8 (Figures 4 and 5) was sampled in Sondages H and I and is orientated roughly north-east to south-west. [5078] measures 6.5m wide and up to 0.7m deep, with even sloping sides, though it was not fully excavated. The upper fill of [5078] (5079) comprised a compact pinkish brown gritty sand up to 0.75m deep and appears to be collapsed bank fill. Three contexts lay under (5079): (5085), (5008) and (5010). (5085) was a mid brown silt sand up 0.08m thick, though it was not fully excavated. (5008) which underlay (5079) and overlay (5010) was a friable dark silty clay up to 0.2m thick and appears to be a tip line. (5010) which underlay both (5079) and (5008) was a mid brown sandy clay possibly collapse from the bank up to 0.43m thick.
- 4.2.12 Ditch 9 (Figures 4 and 5) was sampled in Sondage I and is orientated roughly north-east to south-west. [5035] measures 0.8m wide and 1m deep with steep sides and a flat base. The upper fill of [5035], (5032) comprised a medium brown silty clay up to 0.55m deep and overlies (5043). Within (5032) were two large angular stone blocks the largest 0.3m by 0.2m by 0.3m which appears to be collapsed bank revetment. (5043) which underlies (5032) and overlies (5033) comprises a pinkish clay up to 0.20m thick, which appears to be collapsed bank material. (5033) which underlies (5043) comprises a reddish brown sandy clay up to 0.35m thick. The basal fill, (5034) underlies (5033) and comprises a medium brown silty clay up to 0.25m thick.
- 4.2.13 Palisade 9 (Figures 4) was sampled in Sondage I and is orientated roughly north-east to south-west. [5043] measures 0.78m wide and 0.34m deep, with near vertical sides and a flat base, and has two fills: (5041) and (5044). (5044) comprises dark brown silty clay, up to 0.35m thick and (5041) comprises sub-rounded packing stones.

5 INTERPRETATION AND DISCUSSION

5.1 Sequence

- 5.1.1 The stratigraphic sequence from the 2015 season broadly confirms the results from 2014: of earlier palisades and later ditches and it is likely that the Ditches 6 and 8 from 2015 relate directly and respectively to Ditches 4 and 1 (Cook and Connolly 2014), though this cannot yet be confirmed. Explicitly no attempt will be made at this stage to link the smaller ditches and palisade to previous seasons. It is also clear that a much larger number of enclosing features were identified in this season compared to 2014: with 6 ditches and palisades in 2014 (ibid) compared to 10 in 2015.
- 5.1.2 It is therefore possible to identify a much greater range and depth of activity on site: Ditch 6 cuts Ditches 5 and 7 and Palisade 5. In turn Ditch 7 cuts Palisade 6. It also seems unlikely that Ditches 8 and 9 could coexist and that Palisade 8 would have been under the assumed accompanying bank of Ditch 8. It also seems likely that certain palisades would have cut others: for example the line of Palisades 5 and 6 would have intersected each other. This leads to the potential to further reconstruct, a relative chronology of enclosing events.
- 5.1.3 The radiocarbon date from Ditch 5 (SUERC-65169 401-351 cal BC) identifies a significant addition to our understanding of the broad sequence. As expected this is earlier than the material previously recovered from Ditch 4 which cuts Ditch 5: (SUERC-57513 cal AD 58-125 and SUERC-41444 cal AD 126-260). The date from Ditch 5 indicates that it was cut prior to 401-353 cal BC. The dated charcoal is likely to relate to internal activity and it is likely that the structures associated with this activity have subsequently been destroyed by ploughing.
- 5.1.4 It is clear from the 2015 season that there was a high level of soil movement from the crest of the hill and thus from the enclosure's interior to the surrounding slopes. The underlying subsoil lies within mere centimetres of the ground surface at the eastern end of Trench 5 but deepens to c 0.75m at the western, downslope end. In effect, it is proposed that the central interior of the enclosure and any associated structures have been truncated to such an extent, that no trace may remain of internal activity, however, in areas off the main summit will however be protected by soil movement, and although at a greater depth, the potential for surviving occupational structures and activities will remain.

6 FURTHER WORK

6.1 Dissemination

6.1.1 The results of this work will be synthesised and submitted to East Lothian Council, the landowner and be available on the Rampart Scotland website. In addition, précis will be submitted to DES and OASIS and for publication in one of the many popular archaeological magazines or newsletters. The results of the excavation and an analysis of the conflict between the cropmark transcription and the excavation and geophysical survey will be submitted for publication in the Proceedings of the Society of Antiquaries of Scotland.

6.2 Fieldwork

6.2.1 Two further seasons of fieldwork are proposed to explore the nature of the platform settlement of the enclosure first examined in 2011 (Cook and Connolly 2012). In addition to further exploring the location of a potential entrance to the north east of the enclosure.

7 CONCLUSION

7.1 The work undertaken at Sheriffside, has to date shown the value of limited but targeted excavation: a simple bivallate enclosure has been revealed to be a complex and nuanced sequence over twelve hundred years activity. The 2015 season has confirmed the results of the 2012 key-hole excavation albeit with considerably more detail and further developed the chronology and construction exposed in 2014. This has revealed around 1200 years of settlement and activity in which the majority of the phases of enclosure have been dated.

8 ACKNOWLEDGMENTS

8.1 The authors would like to thank the Edinburgh Archaeological Field Society with their geophysical expertise; the advice of the East Lothian Council's archaeological team; and last but not least the volunteers (Adeline Gagnier, Sean Sullivan, Therese McCormick, Hannah Fry, Kerri Knigge, Naomi Wells, Jessica Horton, Brittany Jones, Maggie Kobik, George Davies, Penny Coombe and Nathan Eastwood) and thanks to Mr Eric Glendinning for allowing us access to his land.

9 BIBLIOGRAPHIC REFERENCES

Cook, M, Connolly, D and Druce, D 2012 *Rampart Scotland Project 3: Sherifffside, Gifford, East Lothian*, Season 2 unpublished Data Structure Report

http://www.rampartscotland.co.uk/pdf/DSR_sherifffside_2012.pdf

Cook, M, Connolly, D 2014 *Rampart Scotland Project 3: Sherifffside, Gifford, East Lothian*, Season 3 unpublished Data Structure Report

http://www.rampartscotland.co.uk/pdf/DSR_sherifffside_2014.pdf

APPENDIX 1: CONTEXT DESCRIPTIONS

Context	Sondage	Group	Type	Description
5001	na	na	topsoil	Friable mid brown silty material varies from 0.05m at east to 0.15m at west.
5002	na	na		Hard packed clay, varies from dark brown to pink
5003	D	D5		Fill of cut 5061, lies over 5063. Comprises compact light grey brown sandy silt, up to 0.22m thick. Same as 5066. Cut by 5013
5004	D	D6		Upper fill of cut 5013. Lies over 5055. Light brown friable silty soil up to 0.2m thick. Represents natural accumulation in ditch fill.
5005				Void
5006				Void
5007	D	P5		Fill of cut 5016, mid brown silty soil, abuts 5015, up to 0.4m thick
5008	I and H	D8		Fill of cut 5022, lies under 5079 and over 5010, dark brown silty clay, possible tip line, up to 0.10m thick.
5009				void
5010	I and H	D8		Fill of cut 5022, lies under 5079, mid brown silty clay, possible tip line, up to 0.25m thick.
5011	D	D6		Fill of cut 5013, lies under 5057 and over 5071 and at least 0.2m thick. Hard packed minergenic sands and gravel, appears to be collapse of bank
5012				Same as 5040
5013	D	D6		Cut of ditch, not fully excavated but at least 5m wide and 0.8m deep, filled with 5004, 5055, 5056, 5057, 5011, 5072 and 5058. Cuts D5, 5061, D7 5054 and P5 5016. The ditch has even sloping sides. Same as 5051. In Sondage F 5013 is filled with 5047, 5048, 5049 and 5050.
5014	D	P5		Same as 5019
5015	D	P5		Fill of cut 5016, packing stones, sub rounded on average 0.1m by 0.2m by 0.15m, abuts 5007, up to 0.4m thick.
5016	D	P5		Cut of palisade, filled with 5007 and 5015. Same as 5014 and cuts natural. Cut is 0.37m wide and up to 0.4m deep, with steep sides and a concave base. P5 cut by D6 5013.
5017	D			natural
5018				Same as 5055
5019	G	P8		Cut of palisade, filled with 5020 and 5021, unexcavated.
5020	G	P8		Fill of cut 5019, stone fill.
5021	G	P8		Fill of cut 5019, orange brown, not excavated.
5022	I and H	D8		Cut of ditch, filled with 5036, 5079, 5085, 5008 and 5010. Same as 5078 and 5037 and 5078. Up to 6.5m wide and at least 0.3m deep though not fully excavated.
5023				void

Context	Sondage	Group	Type	Description
5024	E	D5		Same as 5075
5025	D	P5		Cut of individual post within palisade 5016, 25m diameter and 0.4m deep , filled with 5026.
5026	D	P5		Same as 5017
5027	D	P5		Cut of individual post within palisade 5016, 25m diameter and 0.4m deep , filled with 5026.
5028	D	P5		Same as 5017
5029				natural
5030				void
5031	H and I			Mid brown clay silt, up to 0.60 m thick, hill wash from up slope.
5032	I	D9		Fill of cut 5035, lies under 5031 and over 5043, medium brown silty clay, up to 0.55m thick, contains 50% substantial angular stone blocks up to 0.4 by 0.5 by 0.3 which may be collapse from bank revetment.
5033	I	D9		Fill of cut 5035, lies under 5043 and over 5034. Red brown pink clay with frequent stones, up to 0.15m thick.
5034	I	D		Lowest fill of cut 5035, lies under 5033, light brown sandy gray silt, up to 0.25m thick.
5035	I	D9		Cut of ditch, filled with 5032, 5033, 5043 and 5034. 1.8m wide and up to 1m deep, with near vertical sides and a flat base.
5036	I and H	D8		Same as 5079.
5037	I and H	D8		Same as 5022 and 5078
5038	G	P7		Fill of cut 5059, grey brown compact clay, lies under 5070 and over natural, up to 0.18m deep. Contains subrounded stones 20%, possibly packing stones, on average 0.15m by 0.1m by 0.1m.
5039	D and G	P6		Cut of palisade filled with 5040, up to 1m wide and 0.6m deep with near vertical sides and a flat base.
5040	D and G	P6		Fill of cut 5039 mid brown silty soil
5041	I	P9		Fill of cut 5042, packing stone for palisade, sub-rounded on average 0.20 by 0.3m by 0.4m. Abuts 5044.
5042	I	P9		Cut of palisade, filled with 5041 and 5044, measures 0.78m wide and 0.34m deep, with near vertical sides and a flat base.
5043	I	D9		Fill of cut 5035, lies under 5032 and over 5033, pink gravel lens, up to 0.14m thick.
5044	I	P9		Fill of cut 5042, dark brown silty clay, up to 0.35m thick. Abuts 5041.
5045				void
5046	F	D7		Fill of cut 5054, light pink brown sandy soil up to 0.3m thick.
5047	F	D6		Upper fill of cut 5013, lies over 5048, medium brown sandy clay, up to 0.3m thick. Possibly the same as 5004?
5048	F	D6		Fill of cut 5013, lies under 5047 and over 5049 and 5050, mid to dark brown sandy silt, up to 0.44m deep.
5049	F	D6		Fill of cut 5013, lies under 5048, pinkish brown gravelly sand, up to 0.3m thick.
5050	F	D6		Fill of cut 5013, lies under 5048, dark brown clay silt, up to 0.2m thick.
5051	F	D6		Same as 5013
5052	F	D7		Fill of cut 5051 lens within 5048, up to 0.2m thick, possible tip line.
5053	F	D6		Fill of cut 5013, mid brown silt, up to 0.2m thick, though not fully excavated cut by 5054.
5054	D	D7		Cut of ditch, steep sides with a flat base, measures 1.15m wide and up to 0.9m deep. Filled with 5080, 5081, 5082 and 5083.
5055	D	D6		Fill of cut 5013, lies under 5004 and over 5056, up to 0.2m thick. Dark organic rich soil, numerous flecks of charcoal, includes pottery sherd. Appears to be a tip line from internal use.
5056	D	D6		Fill of cut 5013, lies under 5055 and over 5057, up to 0.13m thick. Light brown sandy soil, appears to represent natural erosion into ditch.

Context	Sondage	Group	Type	Description
5057	D	D6		Fill of cut 5013, lies under 5056 and over 5011, up to 0.1m thick. Dark brown clay deposit, appears to represent either a tip line or natural infilling of the ditch.
5058	D	D6		Fill of cut 5013 lies under 5071, while not fully excavated is at least 0.23m thick. Dark friable silt with traces of charcoal, appears to be a tip line from internal occupation.
5059	G	P7		Cut of palisade, filled with 5038 and 5070, measures 0.43m wide and 0.6 m deep, has near vertical sides with a flat base.
5060				void
5061	D	D5		Cut of possible ditch, filled with 5003, 5063, 5064, 5073, 5074 and 5075, all of which were cut by 5013. The cut was not fully excavated but is at least 0.8m deep 3m wide with a near vertical edge on its eastern side.
5062				Same as 5058
5063	D	D5		Fill of cut 5061, lies under 5003 and over 5064. Comprises diffuse pinky sandy silt, up to 0.24m thick, appears to be collapse of bank. Cut by 5013.
5064	D	D5		Fill of cut 5061, lies under 5063 and over 5073, 5074 and 5075 up to 0.2m thick. Mid brown friable silt with c 10% charcoal inclusions. Cut by 5013
5065				Same as 506 and 5073
5066	D	D5		Fill of cut 5061, lies over 5063. Comprises compact light grey brown sandy silt, up to 0.22m thick. Same as 5003. Cut by 5013
5067				Same as 5073
5068				Same as 5075
5069				void
5070	G	P7		Upper fill of cut 5059, reddish brown compact material, some 10% small stones, up to 0.45m deep.
5071	D	D6		Fill of cut 5013, lies under 5011 and over 5058, reddish brown clay material, collapse from bank.
5072	D	D6		Fill of cut 5013, lies under 5071 and over 5058. Hard packed grey brown material, appears to be from collapsed bank.
5073	D	D5		Fill of cut 5061, lies under 5064 and over natural. Mid brown clay rich silt, c 50% charcoal inclusions, up to 0.26m thick. Cut by 5013. Appears to be midden material from occupation.
5074	D	D5		Fill of cut 5061, lies within 5075. Pink clay lens up to 0.07m thick. Cut by 5013. Possible collapse of bank.
5075	D	D5		Fill of cut 5061, abuts/revets 5064. Tightly packed band of sub-rounded stone, c 0.1m, by 0.15m by 0.2m. Also identified in Sondage E. Cut by 5013. Appears to be collapsed revetment from bank associated with D5.
5076				void
5077				void
5078				same as 5022
5079	I and H	D8		Upper fill of cut 5022, lies over 5008, pinkish brown gritty sand up to 0.3m thick.
5080	D	D7		Upper fill of cut 5054, compact light brown silt, up to 0.3m thick, lies over 5082 and abuts 5081.
5081	D	D7		Upper fill of cut 5054, light brown silt, up to 0.3m thick, lies over 5082 and abuts 5082.
5082	D	D7		Middle fill of cut 5054, mid-brown silt, up to 0.4m thick, lies over 5083 and under 5080 and 5081.
5083	D	D7		lowest fill of cut 5054, mid-brown silt, up to 0.12m thick, lies over natural and under 5082.
5084	G			Pinky grey soil, under 5001 and over natural, up to 0.15m thick, appears to be redeposited topsoil from upslope.
5085	I and H	D8		Fill of cut 5022, lies under 5079, mid brown silty clay, up to 0.18m thick.
5086				Same as 5079
5087				natural

APPENDIX 2: DRAWING RECORD

Drawing No	Sondage	Scale	Type	Description
1	na	1:100	plan	Overall plan of sondages on site
2	D	1:20	plan	Post-ex plan of P5. 5014, 5015, 5016, 5025, 5026, 5027 and 5028
3	E	1:20	plan	Pre-ex plan of putative stone features 5006, 5023, 5024
4	G	1:20	plan	Pre-ex plan of P8. 5019, 5020 and 5021
5	D	1:20	plan	Post-ex plan of P5. 5014, 5015, 5016, 5025, 5026, 5027 and 5028
6	na	1:50	plan	Overall site plan
7	I	1:20	section	South facing section through D9 and D9. 5001, 5013, 5031, 5035, 5036, 5037, 5084, 5032, 5034, 5033 and 5043
8	D and F	1:20	plan	Plan of features within Sondage D and
9	D	1:20	section	South facing section through D6 and D5. 5004, 5011, 5055, 5056, 5057, 5058, 5061, 5063, 5064, 5066, 5071, 5072, 5073, 5074 and 5075
10	E	1:20	plan	Pre-ex plan of Sondage E, 5075
11	G	1:20	plan	Plan of sondage G. 5019, 5020, 5021, 5038, 5039, 5040, 5059.
12	F	1:20	section	East facing section through D6 and D7. 5046, 5047, 5048, 5049, 5050, 5051, 5054,
13	na	1:20	plan	Pre-ex plan of P9 5041, 5042.
14	G	1:20	section	South facing section through P7. 5001, 5002, 5038, 5059, 5070 and 5084
15	E	1:20		South facing section of Sondage E, 5011, 5071, 5075 and 5075
16	H	1:20	section	East facing section through D8, 5008, 5010, 5078, 5079, 5084 and 5085
17	D	1:20	section	East facing section through D6, P5, D7. 5013, 5015, 5016, 5039, 5040, 5054, 5080, 5081, 5082, 5083.
18		1:10	section	South facing section through P9, 5042 and 5041.

APPENDIX 3: SAMPLE RECORD

Sample No	Context	Description
1	5007	Bulk soil sample
2	5007	Bulk soil sample
3	5007	Charcoal sample
4	5058	Charcoal sample
5	5073	Charcoal sample
6	5055	Charcoal sample
7	5055	Charcoal sample
8	5034	Charcoal sample

APPENDIX 4: PHOTOGRAPHIC RECORD

Shot no	Camera no	Direction	Context	Sondage	Description
1	1	W			General view of site during topsoil removal
2	2	NW			General view of site during topsoil removal
3	3	SW			General view of site during topsoil removal
4	4	S			East end of Trench
5	5	S			Central area
6	6	S			West end of Trench
7	7	SE			General view
9	9	NE			General view
10	10	N			West end of trench
11	11	N			Central area of trench
12	12	N			East end of trench
13	13	NE		A	View of Sondage A
8	8	E			General view of site after topsoil removal
14	14	W			General view of people working
15	15	W			General view of people working
16	16	W			General view of people working
17	17	W			General view of people working
18	18	W			General view of people working
19	19	W			General view of people working
20	20	W			General view of people working
21	21	w			General view of people working
22	22	N			General site shot
23	23	NW		D	General shots
24	24	E		D	General shots
25	25	E		D	General shots
26	26	NW		D	General shots
27	27	N		D	General shots
28	28	N	5019, 5020, 5021		Pre-ex shot of P8
29	29	NW	5019, 5020, 5021		Pre-ex shot of P8
30	30	SE	5019, 5020, 5021		Pre-ex shot of P8
31	31	SW	5023		Stones thought to be palisade but not
32	32	NW	5023		Stones thought to be palisade but not
33	34	NW	5016, 5007, 5025, 5026, 5027, 5028	D	Working shot Palisade 5
34	36	NW	5016, 5007, 5025, 5026, 5027, 5028	D	Working shot Palisade 5
35-50	37-52			D	Sondage D, shots for photo montage
51	53	E	5016	D	Section of P5
52	54	SE	5016	D	Section of P5
53	56	NE	5016	D	Section of P5
54	57	E	5016	D	Section of P5
55-69	58-83			D	SW facing section of Sondage D, Ditches 5 and 6
70-77	84-91			D	NE facing section of Sondage D, Ditches 5 and 6
78-82	92-96				General site shots
83-91	97-105		5035 and 5022	I	Sw facing section of D8 and D9
92-116	106-30			I	D8 and D9 for photo model
117	131		5060		Pre-ex shot of possible palisade but subsequently identified as stones
118	132		5060		Pre-ex shot of possible palisade but subsequently identified as stones
119	133	N	5059, 5070 and 5038	G	P7 south facing section
120	148	N	5041, 5042	na	P9 pre-ex shot
121	149	NE	5013, 5075	E	Section through D5 and D6
122	150	NE	5013, 5075	E	Section through D5 and D6
123	151	NE	5013, 5075	E	Section through D5 and D6

Shot no	Camera no	Direction	Context	Sondage	Description
124	152	NE	5008, 5010, 5078, 5079, 5085	F	Section of D6 and D7
125-38	153-66			F	Photo model of intersection between D6 and 7
139042	167-70	NE	5054	F	Photo model of intersection between D6 and 7
143-58	171-88	N		I	Photo model of D8

APPENDIX 5: FINDS LIST

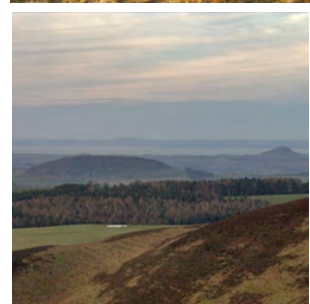
Find No	Context	Description
1	5018	Single sherd of pot
2	5017	Piece of slag
3	5001	Piece of chert debitage
4	5057	Pottery sherd
5	5050	Pot sherd
6	5055	Pot sherd
7	US	Fragment of hammer stone

APPENDIX 6: Discovery and Excavation in Scotland Report

LOCAL AUTHORITY:	East Lothian
PROJECT TITLE/SITE NAME	Rampart Scotland: Sheriffside Season 4
PROJECT CODE:	003
PARISH:	GARVALD AND BARA
NAME OF CONTRIBUTOR:	Murray Cook and David Connolly
NAME OF ORGANISATION:	Rampart Scotland
TYPE(S) OF PROJECT:	Research Keyhole Excavation
NMRS NO(S)	NT56NE 43
SITE/MONUMENT TYPE(S):	Ditched enclosure
SIGNIFICANT FINDS:	
NGR (2 letters, 6 figures)	NT 55505 67739
START DATE (this season)	July 2015
END DATE (this season)	July 2015
PREVIOUS WORK (incl. DES ref.)	Evaluation. DES 2012, 2014 Connolly and Cook
MAIN DESCRIPTION: (May include information from other fields)	<p>(NARRATIVE) This report represents the results of Rampart Scotland Project 3, Season 4: a fourth phase of archaeological evaluation undertaken at Sheriffside cropmark enclosure, Gifford, East Lothian undertaken in August 2015.</p> <p>The project comprised the machine excavation of a single trench orientated east-west and measuring 9.5m wide and 23.5m long, orientated east-west with a 1.5m wide extension running c 40m to the west.</p> <p>The eastern end of the trench had been heavily plough truncated resulting in the complete destruction of all cut features. To the west and downslope the topsoil had been deepened.</p> <p>The excavation identified five ditches and five palisades all of which were orientated roughly east-west and appeared to enclose the hilltop.</p> <p>It was not possible to explicitly link the linear features identified in 2015 with those of earlier seasons and thus the 2015 features were given different features numbers.</p>
PROPOSED FUTURE WORK:	Further fieldwork and post-excavation
CAPTION(S) FOR ILLUSTRS:	--
SPONSOR OR FUNDING BODY:	Rampart Scotland
ADDRESS OF MAIN CONTRIBUTOR:	6a Gladstone Place, Stirling FK8 2NN
EMAIL ADDRESS:	murraycook35@hotmail.co.uk
ARCHIVE LOCATION (intended/deposited)	Archive to be deposited in NMRS



FIELDSCHOOL



Fieldschool - Research - Training - Discovery
A multi-disciplinary accessible investigation into Scotland's Prehistoric archaeology

Learn more: www.rampartscotland.com